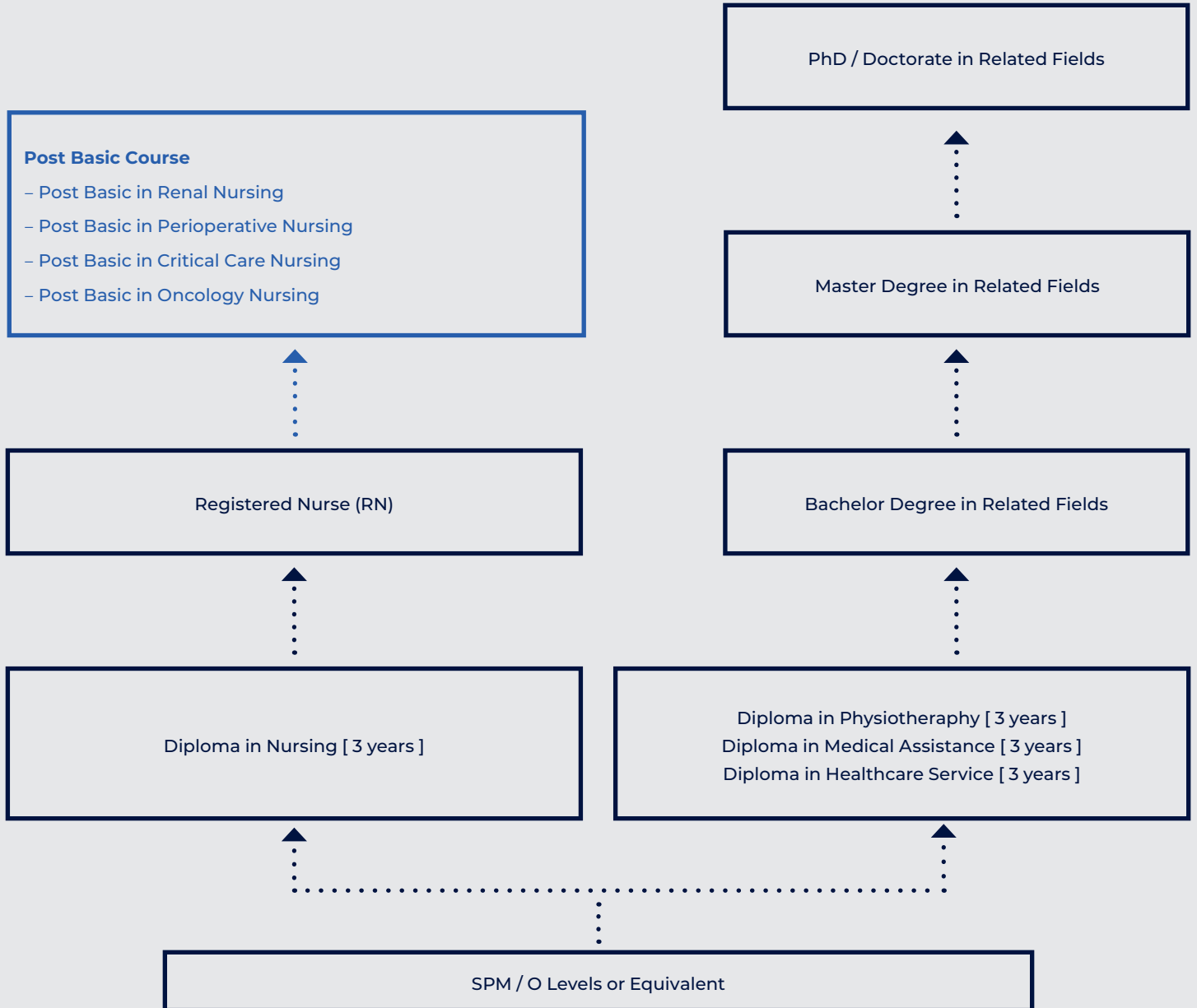




## Study route

Selangor



\* For Post Basic programs, kindly refer to the Post Basic flyers or website for more information.

The UOW Malaysia, part of the University of Wollongong Australia Global Network, attempts to ensure the information contained in this publication is correct at the time of publication (January 2023); however, sections may be amended without notice by the institute in response to changing circumstances or for any other reason. Check with the institute at the time of application/enrolment for any updated information.



R2/723/4/0034(05/22) MQA/FA7538

# Diploma in Nursing

## Intakes

July and October

## Duration

3 Years (Full-Time)

## Course Location

UOW Malaysia College,  
Glenmarie

Nursing is an integral part of the healthcare team and are professionals that are in great demand worldwide. Highly skilled graduate nurses can seek employment both locally and abroad. The Diploma in Nursing course offered by UOW Malaysia College has been designed to provide graduates with the knowledge, skill and competence required to be a confident and caring nurse.

The course prepares graduates for the challenges of the healthcare industry, comprising the nursing sciences, health sciences and behavioral sciences. Students will experience learning through classes, laboratory work and via clinical placements.

They will also experience nursing in the community and in mental health institutions. The students will be supervised, guided and mentored by experienced and committed lecturers at the college and by competent and dedicated clinical instructors in the clinical areas.

## Career Opportunities

Clinical Instructor | Clinical Nurse Consultant | Clinical Nurse Specialists | Industrial Nurse | Matron | Nursing Administrator | Nursing Educator | Nursing Manager | Nursing Sister | Occupational Health Nurse | Registered Nurse

## COURSE STRUCTURE

### Basic Medical Sciences

- Anatomy and Physiology
- Microbiology and Parasitology
- Pharmacology & Nutrition in Nursing

### Behavioural Sciences

- Communication & Public Relations
- Psychology and Sociology in Nursing
- Professional Development, Ethics and Law in Nursing

### Research Methodology

- Research for Healthcare Professionals

### Nursing Sciences

- Fundamentals of Nursing
- Surgical Nursing
- Nursing Patients with Cardiovascular and Respiratory Disorders
- Nursing Patients with Gastrointestinal Disorders
- Nursing Patients with Haematology and Oncology Disorders
- Obstetric and Gynaecological Nursing
- Nursing Patients with Endocrine and Genitourinary Disorder
- Nursing Patients with Musculoskeletal and Autoimmune Disorder
- Community Health and Gerontology Nursing
- Nursing Patients with Communicable Disease
- Paediatric Nursing
- Nursing Patients with Neurological and Special Senses Disorders
- Mental Health Nursing
- Emergency and Disaster Nursing
- Management & Administrative Nursing

### Clinical Placement

- Clinical Practice I to Clinical Practice VI

### Compulsory Module

- Writing and Referencing

## MPU

- Penghayatan Etika dan Peradaban (Malaysian Students) / Bahasa Melayu Komunikasi 1 (International Students)
- Personal Development Skills
- Society and Development in Malaysia
- Teamwork and Community
- Bahasa Kebangsaan A\*

\* Bahasa Kebangsaan A is compulsory for all Malaysian students

- without a credit in SPM Bahasa Melayu.
- without SPM Bahasa Melayu (applicable to students from UEC, O Levels, or other equivalent programs)

## ENTRY REQUIREMENT

### Academic

Qualification	Requirement
SPM / O Levels / UEC	5 Credits including Bahasa Melayu and Mathematics  Credit in either one (1) any subject in Science/ Biology/Chemistry/ Physics/Applied Science  2 Credits in any other subjects  Pass in English
International Students	O Levels or Equivalent  5 Credits including Mathematics  Credit in either one (1) any subject in Science/ Biology/Chemistry/ Physics/Applied Science  3 Credits in any other subjects

All students must undergo medical check-up.

## ENGLISH REQUIREMENT

<b>Local Student</b>	Pass in English at SPM level or equivalent
<b>International Student</b>	Band 5.5 in IELTS; or a min score of 46 (IBT) or 8 (Essentials-Online) in TOEFL; or Cambridge English (160); or PTE Academic (51)

If English Language requirements are not fulfilled, additional English module(s) may be taken at UOW Malaysia.



R2/726/4/0090 A11163

# Diploma in Physiotherapy

## Intakes

January, May and September

## Duration

3 Years (Full-Time)

## Course Location

UOW Malaysia College,  
Glenmarie

A physiotherapist works as a member of the healthcare team treating clients that may range from small babies to the frail elderly. The profession focuses on human movement as being central to the health and well-being of individuals. Their primary focus is to resolve pain, stabilize injury and prevent it from increasing.

The physiotherapy program encompasses comprehensive learning with emphasis on “hands-on” practice and clinical placements in accredited hospitals. The students will undergo specially designed clinical placements which exceeds the 1,000 hours requirement by the World Confederation of Physiotherapy. The students learn to treat patient holistically while minimising risks, ensure patient safety at all times, and working within a legal and ethical framework.

## Career Opportunities

Physiotherapist in Private & Public Hospitals | Physiotherapy Clinic-Self Employed | Rehabilitation Manager | Sports Physiotherapists | Wellness Physiotherapist | Physiotherapists in NGO's | Physiotherapist in Nursing Homes | Rehabilitation Equipment Supplier | Clinical Instructor/Fitness Trainers

## COURSE STRUCTURE

### Year 1

- Functional Anatomy of Upper Extremity
- Functional Anatomy of Lower Extremity
- Introduction to Health Care I
- Physiotherapeutic Skills I
- Behavioural Science for Healthcare Professionals
- Writing and Referencing
- Functional Anatomy of Spine
- Kinesiology
- Musculoskeletal I
- Electrotherapy I
- Physiotherapeutic Skills II
- Introduction to Health Care II
- Occupational Safety and Health for Health Care Professionals

### Year 2

- Pulmonary Physiotherapy
- Musculoskeletal II
- Electrotherapy II
- Neurology I
- Cardiovascular Physiotherapy
- Physiotherapeutic Skills III
- Clinical Placement I

### Year 3

- Neurology III
- Paediatrics
- Clinical Placement II
- Geriatrics
- Physiotherapy Practice in Sports Injuries and Fitness
- Clinical Placement III
- Research for Healthcare Professionals
- Women's Health

## MPU

- Penghayatan Etika dan Peradaban (Malaysian Students) / Bahasa Melayu Komunikasi 1 (International Students)
- Personal Development Skills
- Society and Development in Malaysia
- Teamwork and Community
- Bahasa Kebangsaan A\*

\* Bahasa Kebangsaan A is compulsory for all Malaysian students

- without a credit in SPM Bahasa Melayu.
- without SPM Bahasa Melayu (applicable to students from UEC, O Levels, or other equivalent programs)

## ENTRY REQUIREMENT

### Academic

#### Qualification Requirement

SPM / O Levels / UEC	5 Credits including Mathematics
	Credit in either one (1) any subject in Science/ Biology/Chemistry/ Physics
	3 Credits in any other subjects
	Pass in English, Bahasa Melayu and Sejarah (History)
International Students	O Levels or Equivalent
	5 Credits including Mathematics
	Credit in either one (1) any subject in Science/ Biology/Chemistry/ Physics
	3 Credits in any other subjects

All students must undergo medical check-up.

## ENGLISH REQUIREMENT

### Local Student

Pass in English at SPM level or equivalent

### International Student

Band 5.5 in IELTS; or a min score of 46 (IBT) or 8 (Essentials-Online) in TOEFL; or Cambridge English (160); or PTE Academic (51)

If English Language requirements are not fulfilled, additional English module(s) may be taken at UOW Malaysia.



R/722/4/0024(06/23) MQA/FA0966

# Diploma in Medical Assistant

## Intakes

July and October

## Duration

3 Years (Full-Time)

## Course Location

UOW Malaysia College,  
Glenmarie

Medical Assistants work closely with Medical Officers in most units in a hospital. UOW Malaysia College offers a three (3) years Diploma in Medical Assistant, which enables students to realise their dreams in pursuing a career in a healthcare setting.

Students are trained in the areas of basic medical sciences and professional modules such as medicine, emergency medicine, surgery, public health, pharmacology, behavioural science and nursing. The students will experience learning in the classroom, practical sessions, hands-on activities combined with student self-directed learning. The students undergo clinical placements to enhance the clinical knowledge and competencies as well as skills in the major areas of medical, surgical, emergency and many others.

## Career Opportunities

Clinical Instructor | Lecturer | Research Specialist | Public/private Hospitals | Administrative Medical Assistant | Community Clinic | Pre Hospital Care & Ambulance | Sales Representative (Medical) | Specialised Medical Assistant

## COURSE STRUCTURE

### Year 1

- Basic Pathology
- Clinical Placement I
- Anatomy & Physiology I
- Health Sociology and Psychology
- Basic Medical Microbiology & Parasitology
- Writing and Referencing
- Pharmacology
- Anatomy & Physiology II
- Occupational Safety and Health for Healthcare Professionals
- Clinical Procedures II
- Community Health I

### Year 2

- Medical Sciences I
- Surgical Sciences I
- Community Health II
- Research for Healthcare Professionals
- Emergency Medicine I
- Clinical Examination
- Surgical Sciences II
- Medical Sciences II
- Emergency Medicine II
- Clinical Practice I

### Year 3

- Clinical Practice II
- Clinical Practice III

## MPU

- Penghayatan Etika dan Peradaban (Malaysian Students) / Bahasa Melayu Komunikasi 1 (International Students)
  - Personal Development Skills
  - Society and Development in Malaysia
  - Teamwork and Community
  - Bahasa Kebangsaan A\*
- \* Bahasa Kebangsaan A is compulsory for all Malaysian students
- without a credit in SPM Bahasa Melayu.
  - without SPM Bahasa Melayu (applicable to students from UEC, O Levels, or other equivalent programs)

## ENTRY REQUIREMENT

### Academic

Qualification	Requirement
SPM / O Levels / UEC	5 Credits including Bahasa Melayu and Mathematics  Credit in either one (1) any subject in Science/ Biology/Chemistry/ Physics/Applied Science with Biology Pass  2 Credits in any other subjects  Pass in English
International Students	O Levels or Equivalent  5 Credits including Mathematics  Credit in either one (1) any subject in Science/ Biology/Chemistry/ Physics/Applied Science  3 Credits in any other subjects

All students must undergo medical check-up.

## ENGLISH REQUIREMENT

<b>Local Student</b>	Pass in English at SPM level or equivalent
<b>International Student</b>	Band 5.5 in IELTS; or a min score of 46 (IBT) or 8 (Essentials-Online) in TOEFL; or Cambridge English (160); or PTE Academic (51)

If English Language requirements are not fulfilled, additional English module(s) may be taken at UOW Malaysia.



R/720/4/0013(12/22) MQA/FA2037

# Diploma in Healthcare Service

## Intakes

January, May and September

## Duration

3 Years (Full-Time)

## Course Location

UOW Malaysia College,  
Glenmarie

This one of a kind program paves the way for blending hospitality with healthcare and transforming customer services in the healthcare industry through a curriculum designed solely to meet the hospitality needs of the industry in line with changing customer requirements and escalating focus on medical tourism. The healthcare industry is one of the fastest creators of employment. There is a need for educated and trained people who can be counted on to deliver the highest quality of services.

This program is uniquely designed to equip graduates with a broad spectrum of knowledge, concepts and skills of healthcare hospitality services, health sciences and information technology. The program focuses on hospitality needs of the healthcare industry which include customer services and feedback management, travel and medical tourism, logistics, medical records, bed board management, event planning as well as related business areas.

## Career Opportunities

Customer Relations, Clinics & Hospital Management | Medical Tourism | Healthcare Firms | IT, Health Insurance & Food Industries

## COURSE STRUCTURE

### Year 1

- Introduction to Hospitality
- Introduction to Information Technology
- Behavioural Science for Healthcare Professionals
- Professional Communication
- Writing and Referencing
- System Analysis and Design
- Health Promotion I
- Health Industry Finance and Economics
- Principles of Tourism
- Occupational Safety and Health for Healthcare Professionals

### Year 2

- Database System
- Principles of Management
- Health Promotion II
- Practical Training I

### Year 3

- Risk Management and Regulatory
- Quality Management and Accreditation
- Principles of Marketing
- Workplace Interpersonal Skills
- Customer Relations Management
- Research for Healthcare Professionals
- Practical Training II

## MPU

- Penghayatan Etika dan Peradaban (Malaysian Students) / Bahasa Melayu Komunikasi 1 (International Students)
  - Personal Development Skills
  - Society and Development in Malaysia
  - Teamwork and Community
  - Bahasa Kebangsaan A\*
- \* Bahasa Kebangsaan A is compulsory for all Malaysian students
- without a credit in SPM Bahasa Melayu.
  - without SPM Bahasa Melayu (applicable to students from UEC, O Levels, or other equivalent programs)

## ENTRY REQUIREMENT

### Academic Qualification

### Requirement

SPM / O Levels / UEC 3 Credits including Mathematics or Science

2 Credits in any other subjects

Pass in English, Bahasa Melayu and Sejarah (History)

International Students O Levels or Equivalent

3 Credits including Mathematics or Science

2 Credits in any other subjects

Candidates MUST be certified as medically fit by a registered medical health practitioner within ONE month from commencement of the program.

A person with any of the following will be disqualified from entry into the program:

- 1) Serious physical/mental illness
- 2) Serious communicable disease

Candidates must not have any physical disabilities or impaired senses that hinder dexterity

All students must undergo medical check-up.

## ENGLISH REQUIREMENT

### Local Student

Pass in English at SPM level or equivalent

### International Student

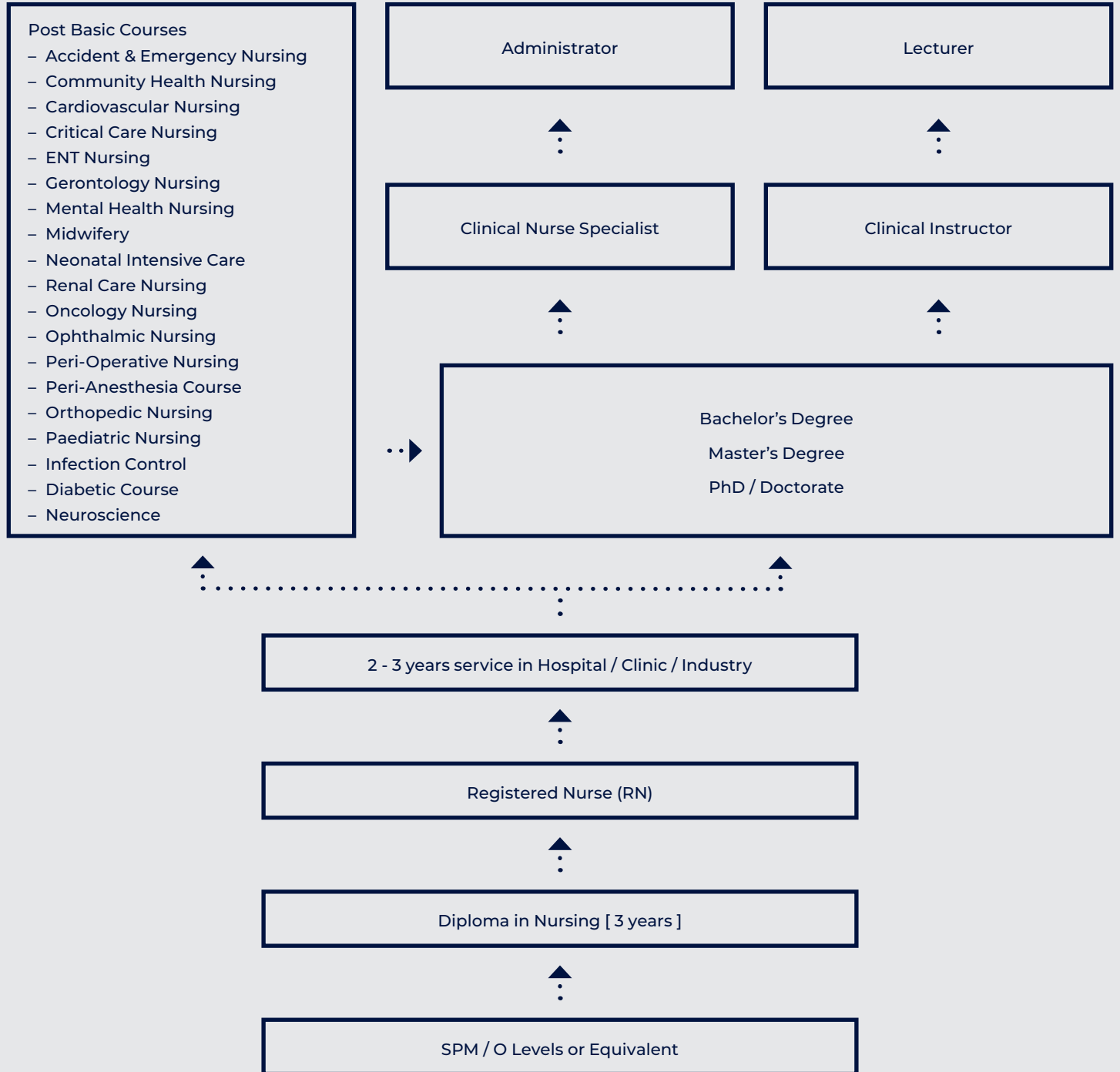
Band 5.5 in IELTS; or a min score of 46 (IBT) or 8 (Essentials-Online) in TOEFL; or Cambridge English (160); or PTE Academic (51)

If English Language requirements are not fulfilled, additional English module(s) may be taken at UOW Malaysia.



## Study route

Penang







R2/723/4/0041(04/22) MQA/FA 2533

# Diploma in Nursing

## Intakes

July

## Duration

3 Years (Full-Time)

## Course Location

UOW Malaysia KDU Penang  
University College, George Town

This program encourages the development of the knowledge, skills and professional attitudes required of a registered nurse. You will be exposed to the concepts of health promotion, prevention and rehabilitation through nursing care management. Different nursing procedures will be introduced to you allowing an understanding of the individual, family and illnesses and dealing with the person as an individual. You will learn how to identify the activities of daily living to treat and prevent complications.

## Career Opportunities

Clinical Instructor | Clinical Nurse Consultant | Clinical Nurse Specialists | Industrial Nurse | Matron | Nursing Administrator | Nursing Educator | Nursing Manager | Nursing Sister | Occupational Health Nurse | Registered Nurse

## COURSE STRUCTURE

### Year 1

- Anatomy and Physiology
- Microbiology, Parasitology, Immunology and Nutrition
- Fundamentals of Nursing 1
- Communication, Human and Public Relations & Counselling
- Clinical Practice 1
- Pharmacology
- Fundamentals of Nursing 2
- Medical Surgical Nursing 1
- Sociology
- Clinical Practice 2

### Year 2

- Psychology
- Professional Development & Medico-Legal in Nursing
- Medical Surgical Nursing 2
- Obstetric and Gynaecology
- Clinical Practice 3
- Medical Surgical Nursing 3
- Medical Surgical Nursing 4
- Pediatric Nursing
- Community Health Nursing 1
- Clinical Practice 4

### Year 3

- Medical Surgical Nursing 5
- Community Health Nursing 2
- Mental Health Nursing
- Emergency & Critical Care Nursing
- Clinical Practice 5
- Nursing Management
- Introduction to Nursing Research & Epidemiology
- Clinical Experience 6

## MPU

- Penghayatan Etika dan Peradaban (Malaysian Students) / Bahasa Melayu Komunikasi 1 (International Students)
  - Personal Development Skills
  - Society and Development in Malaysia
  - Teamwork and Community
  - Bahasa Kebangsaan A\*
- \* Bahasa Kebangsaan A is compulsory for all Malaysian students
- without a credit in SPM Bahasa Malaysia.
  - without SPM Bahasa Malaysia (applicable to students from UEC, O Levels, or other equivalent programs)

Qualification of International students may be sent to Nursing Board Malaysia for verification

## ENTRY REQUIREMENT

### Academic

#### Qualification Requirement

SPM / O Levels / UEC

#### Local Student

5 Credits including Bahasa Melayu, Mathematics and one subject in Science/Biology/Chemistry/Physics/Applied Science

#### International Student

5 Credits including Mathematics and one subject in Science/Biology/Chemistry/Physics/Applied Science

All students must undergo medical check-up.

## ENGLISH REQUIREMENT

### Local Student

Pass in English at SPM level or equivalent

### Local Sponsorship Student

Credit in English at SPM level or equivalent

### International Student

Band 5.5 in IELTS; or a min score of 80 (IBT) or 515 (PBT) or 215 (CBT) in TOEFL; or Cambridge English (160); or PTE Academic (51)

If English Language requirements are not fulfilled, additional English module(s) may be taken at UOW Malaysia.